

2018 LOCS Bond Project

June 2023 Project Update



Lake
Orion
Community
Schools



New Blanche Sims Elementary

Lake Orion Community Schools New Blanche Sims Elementary is a new ground up 68,875 square foot building. The building consists of 19 new classrooms, a secure entry and office spaces, and extended learning spaces within the building. The facility also includes a new kitchen with server, cafeteria with stage, gymnasium, STEM and Media Center. The site work includes new playground equipment, soccer field and a new larger parking lot and a bus & parent drop off loop. The new school sits on the site to the north of the existing Blanche Sims Elementary.



Demolition of Existing Blanche Sims Continues



Final Touch-ups, Cleaning of Trophy Cases



Site Concrete and Landscape Install

Start/Completion

Construction Start – March 7th, 2022
Construction Completed – September 2023

Financial Information

Board Approved Cost:

\$26,284,155 to date

90% Complete through June

Status Update

- Furniture and teacher items moved from old building to new Blanche Sims
- Existing Blanche Sims building demolition kicked off starting June 13th
- Classroom hallway lockers furnished and their installation began this month
- Electrical, HVAC, and temperature controls equipment start-ups to begin end of the month
- Final touches and punch list for millwork, paint finishes, ceilings, and interior fixtures continues
- Site concrete, seeding, and landscape plantings being installed

Scripps Middle School Site and Building Improvements

Lake Orion Community Schools Scripps Middle School is a renovation, addition and site work project. The scope includes a new office addition that will include a new secure entry, and a separate addition for the new elevator. The interior renovation includes finish work, a new mechanical system including new unit ventilators in each classroom, and electrical upgrades. The project also includes site work associated with the new office addition.



New Addition Landscaping



Finalization of Asphalt and Striping

Start/Completion

Construction Start – May 2022

Construction Completed – February 2023

Status Update

- All construction complete
- Site restoration work completed in Spring of 2023

Financial Information

Board Approved Cost:

\$8,597,163

99% Complete through June

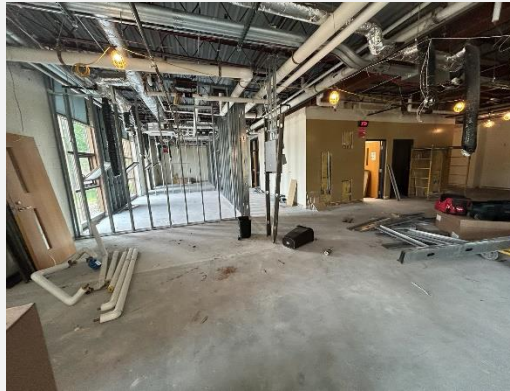


2023 Secure Entries

Lake Orion Community Schools 2023 Secure Entries is an upgrade to Waldon Middle School's, Oakview Middle School's, and Pine Tree Center's existing front entry and office spaces. The existing spaces will be modified with new architectural and security features such as magnetic/electronic locking hardware for lockdowns, added windows for better visibility, and revised room layouts. There will be updated finishes to include new flooring, aluminum building signage, and built-in reception desks. Additionally, the mechanical equipment in these spaces will be updated with new, modern equipment and temperature controls.



Pine Tree Center – Half Height Masonry Wall Install



Waldon – Rough Framing of Wall and Demolition



Oakview – Installed Fan Coil Unit

Start/Completion

Construction Start – June 12th, 2023
Construction Completed – August 2023

Financial Information

Board Approved Cost:

\$1,964,846

31% Complete through June

Status Update

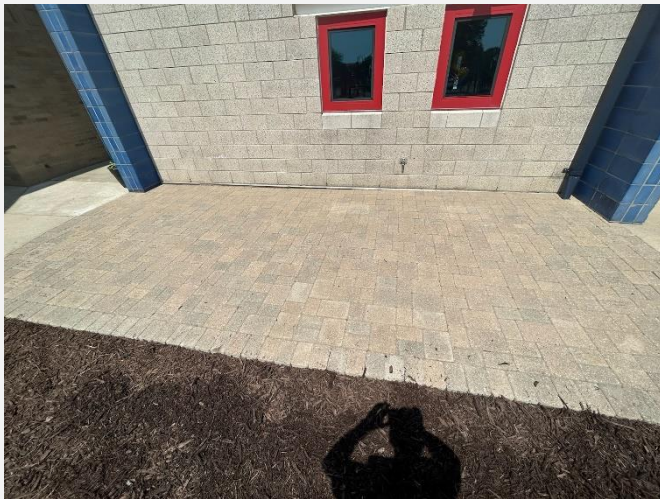
- Owner furnishings moved and demolition began in earnest starting June 12th, 2023
- Temporary construction dust barriers and walls installed
- Air handling equipment, flooring, and other material deliveries to each jobsite began mid-June
- Mechanical and electrical disconnects occurring throughout each project
- Rough carpentry and masonry work beginning in available spaces
- New HVAC equipment installation begins at each building
- Flooring, aluminum storefronts, and other finishes to begin in July 2023

Current Miscellaneous Bond Jobs

Throughout the 2018 Bond Program miscellaneous jobs arise, this page is dedicated to those currently in progress.

Status Updates

- **Stadium Drive Elementary Memorial Pavers**
 - Memorial pavers from 2021 building demolition salvaged and reinstalled at patio of Stadium Drive Elementary
- **Early Childhood Center**
 - Gang bathroom fixtures added to emergency generator circuit for use during power failures
 - Additional walkway pad for added building accessibility and maintenance
- **Webber Elementary**
 - Added directional signage throughout building



Stadium Drive – Memorial Brick Pavers Installed



LO Early Childhood Center – New Concrete Walkway