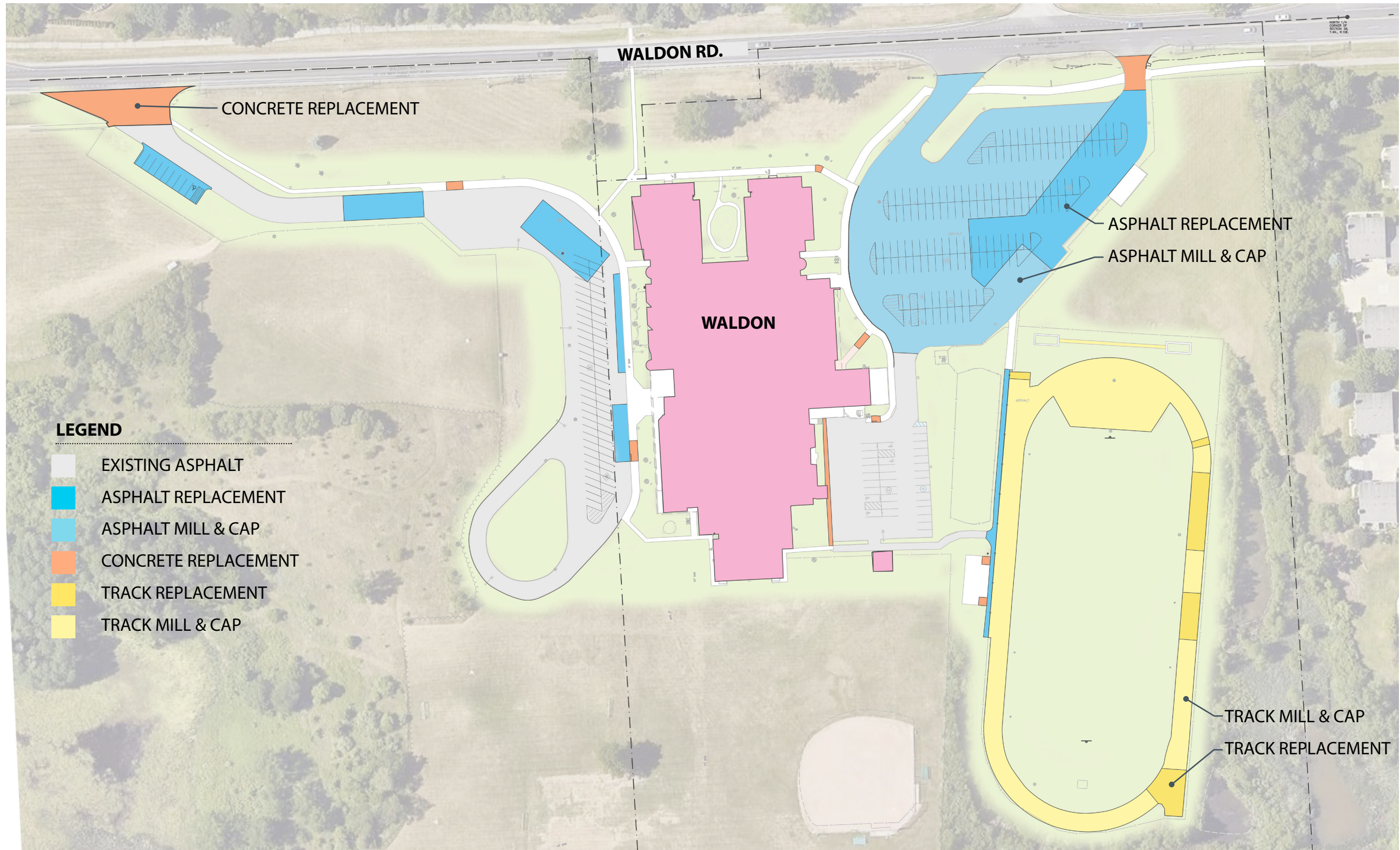


WALDON MIDDLE SCHOOL



EXISTING AERIAL

WALDON MIDDLE SCHOOL



SITE PLAN

WALDON MIDDLE SCHOOL



100L

Waldon Middle School 46 yrs. old (\$5.6 million)

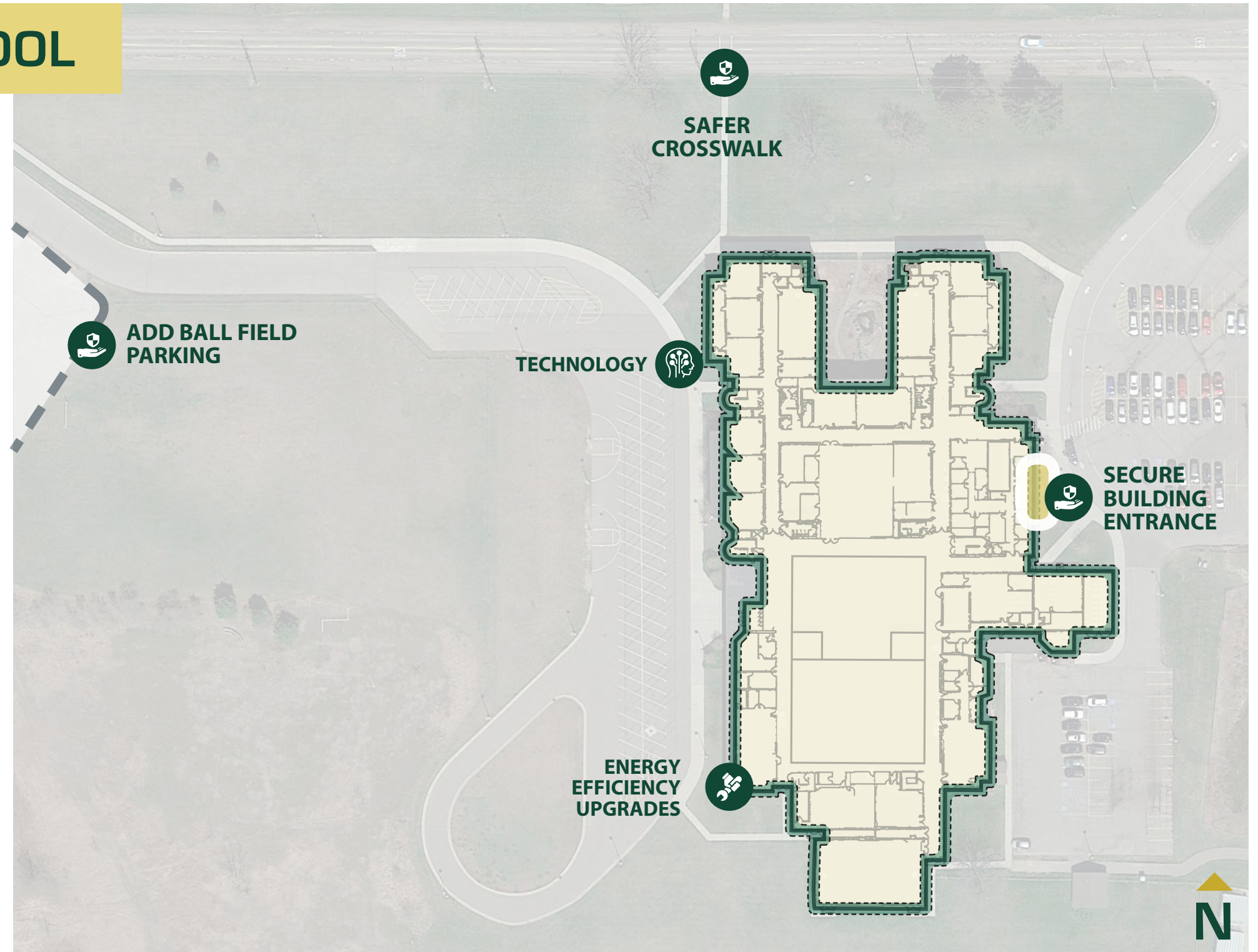
- Reconstructed student (parent and bus) drop-off loops
- Additional site parking
- Renovated/updated extended learning areas

All Facilities

- Secure facility entrances and access control systems
- Security cameras, exterior lighting and playground updates
- Classroom door and door hardware security
- Lockdown doors to “compartmentalize” facilities
- Site traffic safety and flow improvements
- LED lighting, lighting controls, temperature controls, electrical controls and other operational efficiencies
- Mechanical, roofing, windows, flooring, concrete, paving, plumbing and other facility life extending updates and replacements
- Media Center updates
- Infrastructure and education technology improvements, including equipment, wireless internet access, network infrastructure, fiber, and classroom multi-media systems
- Modern, age appropriate, science, technology, engineering, and math (STEM) classrooms and learning spaces with integrated technology and flexible collaborative furniture

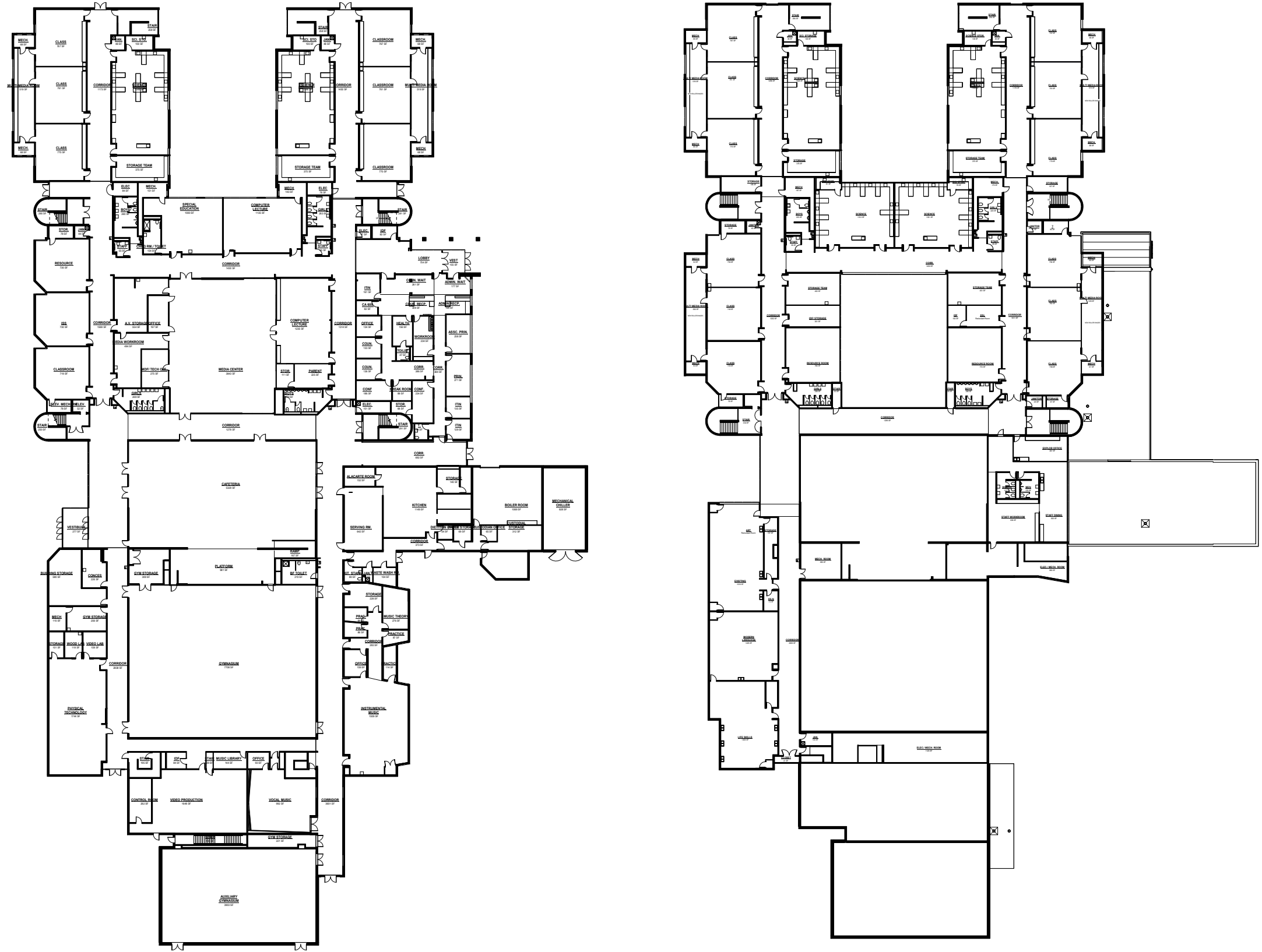
Instructional Technology for All Facilities (\$30.5 million)

- New student devices, in-classroom multi-media equipment, server infrastructure and wireless internet access



BOND BOARD

WALDON MIDDLE SCHOOL



EXISTING FLOOR PLANS

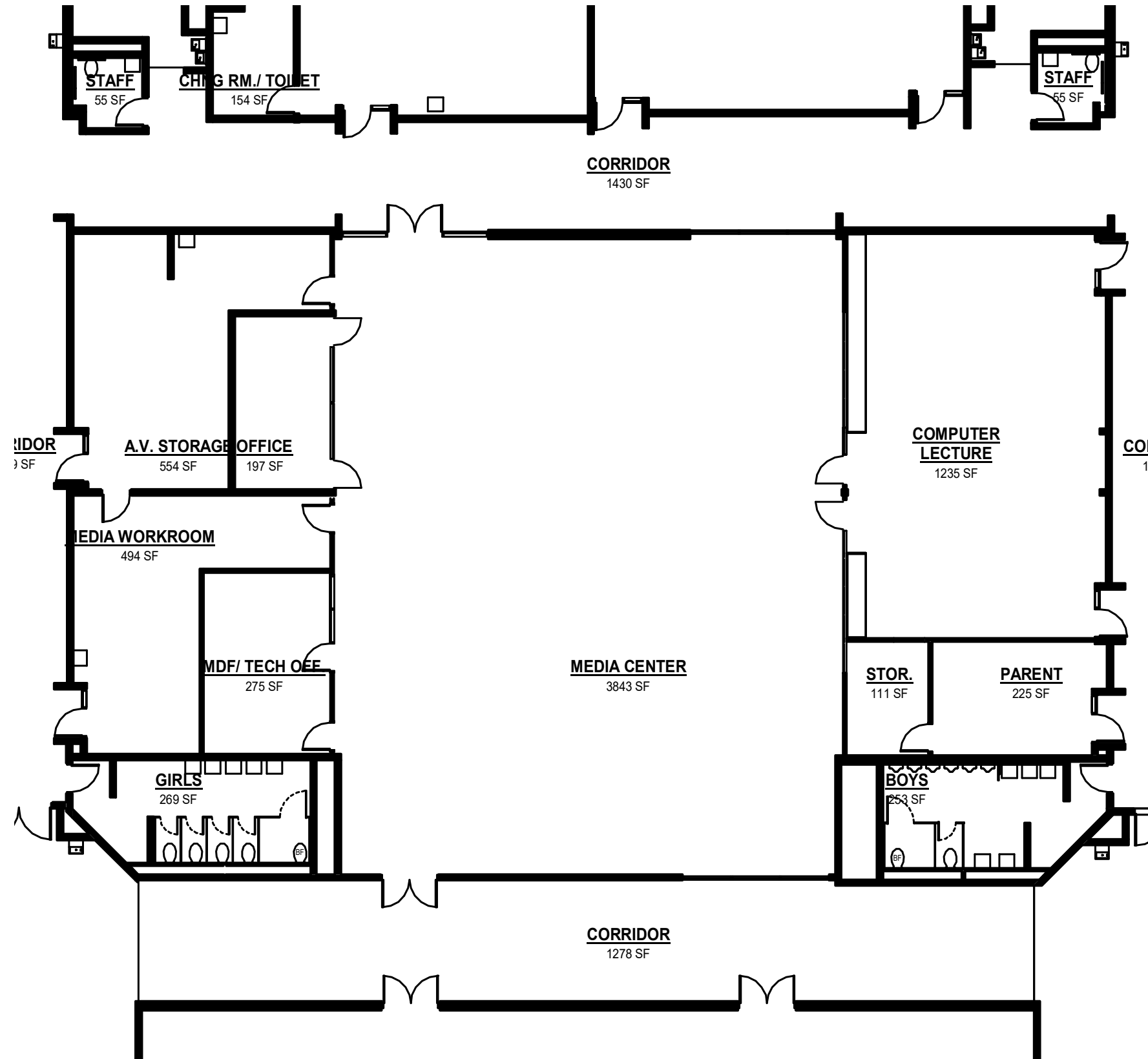
WALDON MIDDLE SCHOOL



- Selective Flooring Replacements
- Selective Roofing Replacements
- Selective Mechanical System Improvements

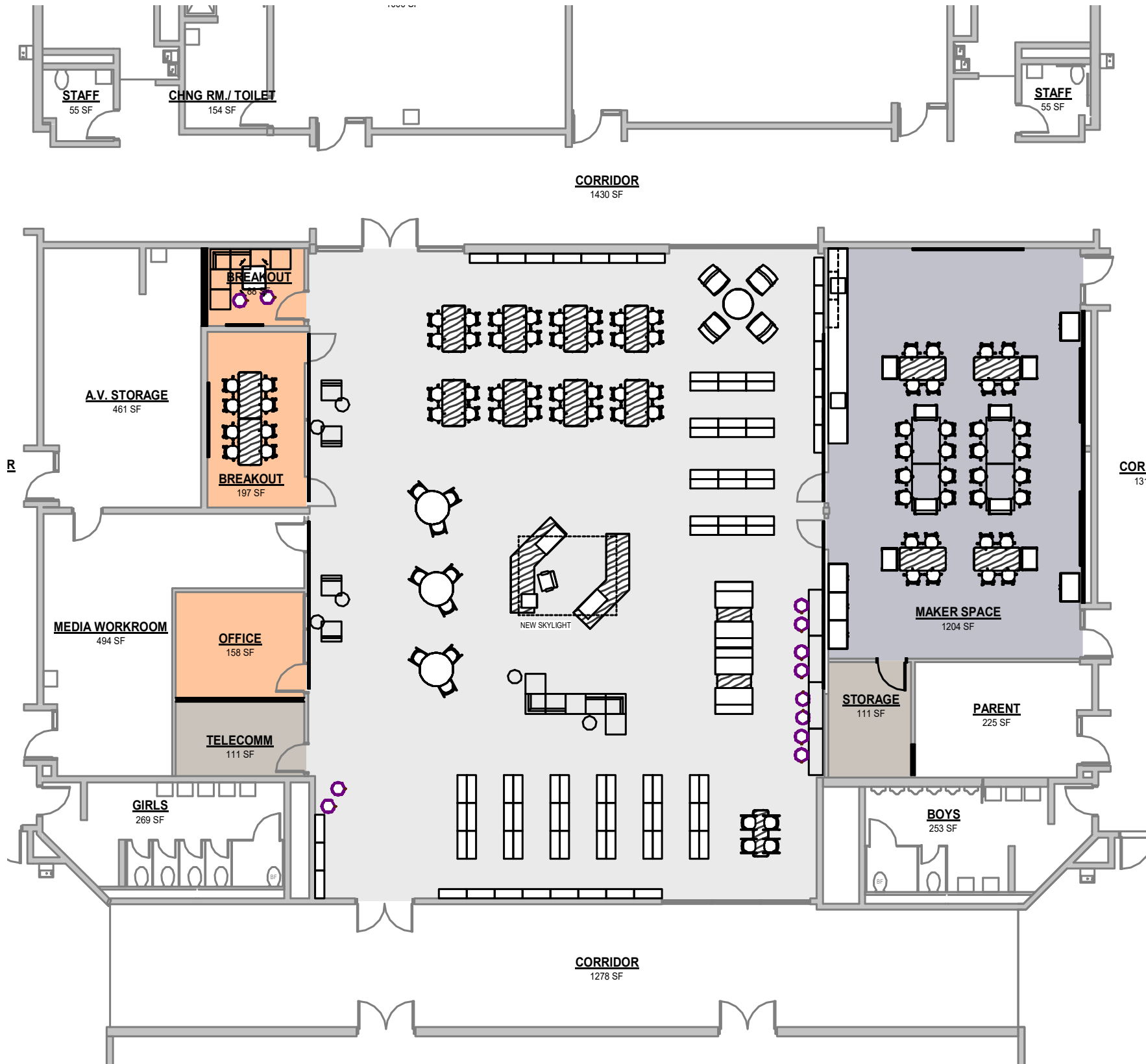
PROPOSED FLOOR PLANS

WALDON MIDDLE SCHOOL



ENLARGED EXISTING FLOOR PLAN

WALDON MIDDLE SCHOOL



- Selective Flooring Replacements
- Selective Roofing Replacements
- Selective Mechanical System Improvements

ENLARGED FLOOR PLAN

WALDON MIDDLE SCHOOL



MEDIA CENTER

WALDON MIDDLE SCHOOL



MEDIA CENTER