

# PSAT™ 8/9





- Understanding the change from MSTEP in grade 8 to PSAT 8/9
- What students can expect when taking PSAT 8/9
- Understanding the results
- Resources connected to the College Board



Grades 3-8, 11



Grade 8

**PSAT™ 8/9**



Grade 9

**PSAT™ 10**

Grade 10



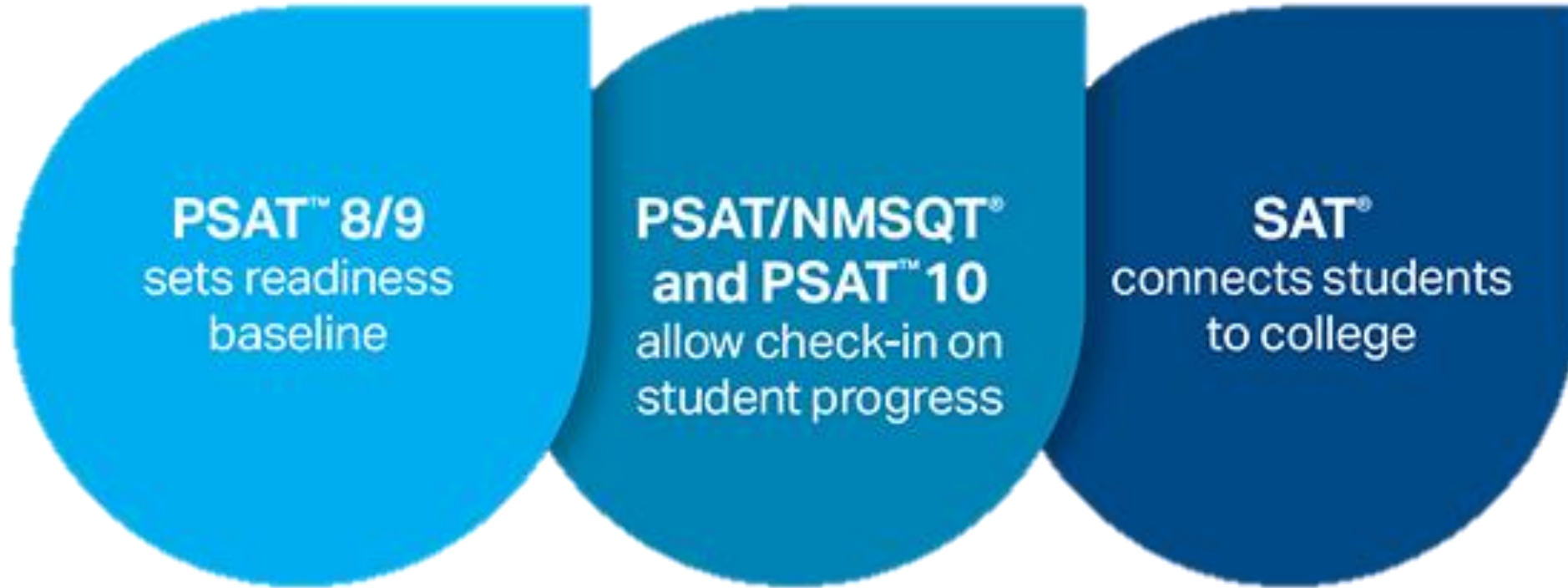
Grade 11

**SAT**



**NEW for 2019:** The PSAT 8/9 replaces the M-STEP ELA and Mathematics assessment in grade 8 and will be included in Michigan's accountability system for 2019. Grade 8 students are also expected to take the M-STEP science and social studies which has been and will continue to be included in Michigan's accountability system.

# College Board Suite of Assessments



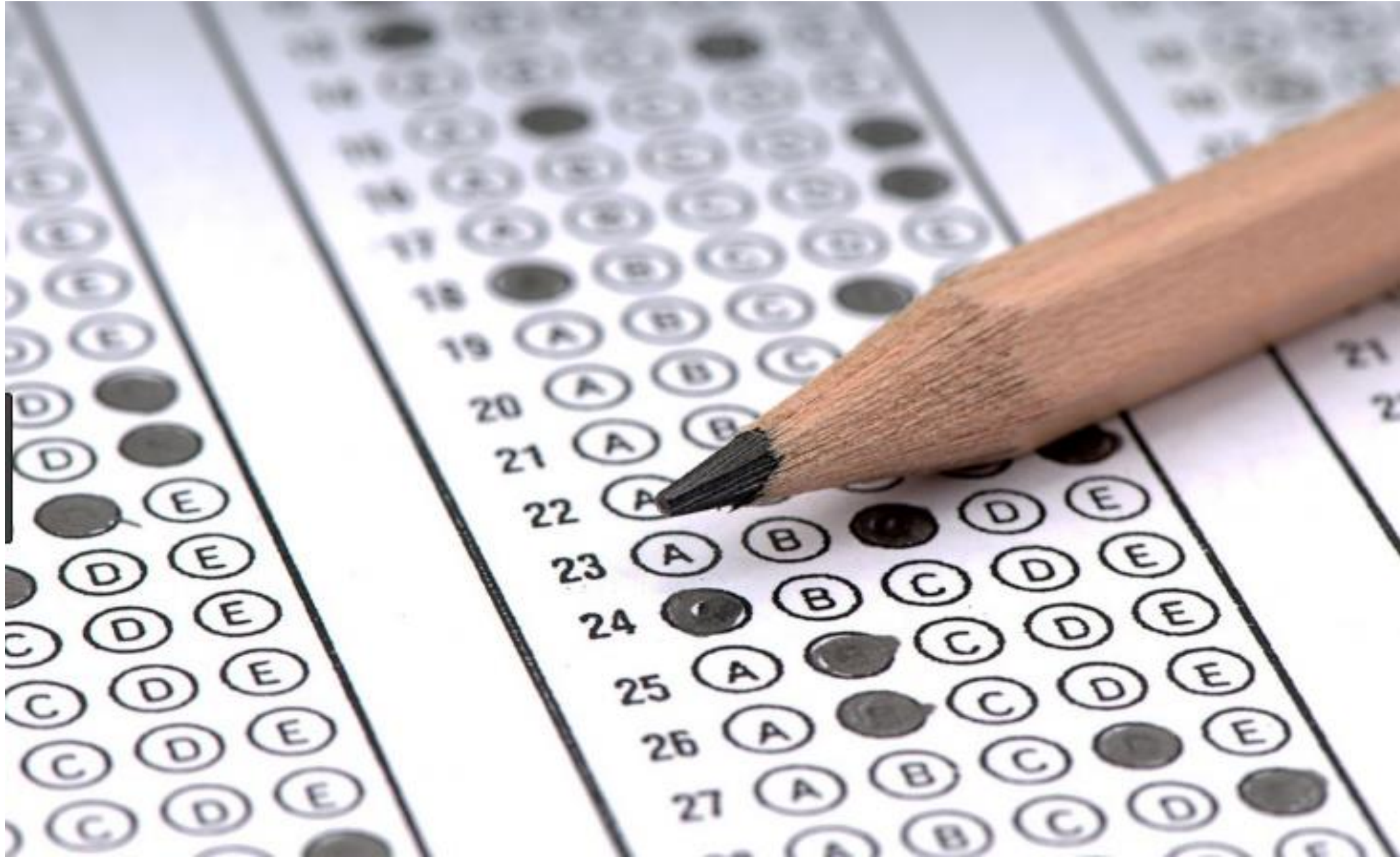
The PSAT 8/9 measures the skills and knowledge (at the level of content and skill appropriate for the eighth and ninth grades) that research shows are the most important for success in college and career



**PSAT™ 8/9**

 **CollegeBoard**





Write answer → in boxes.

Answer:  $\frac{7}{12}$

← Fraction line

Grid in result.

7	/	1	2
.	●	/	.
	0	0	0
1	1	●	1
2	2	2	●
3	3	3	3
4	4	4	4
5	5	5	5
6	6	6	6
●	7	7	7
8	8	8	8
9	9	9	9

Answer: 2.5

← Decimal point

	2	.	5
.	/	/	.
	0	0	0
1	1	1	1
2	●	2	2
3	3	3	3
4	4	4	4
5	5	5	●
6	6	6	6
7	7	7	7
8	8	8	8
9	9	9	9

Answer: 201 – either position is correct

	2	0	1
.	/	/	.
	0	●	0
1	1	1	●
2	●	2	2
3	3	3	3

2	0	1	
.	/	/	.
	●	0	0
1	1	●	1
●	2	2	2
3	3	3	3

**NOTE:** You may start your answers in any column, space permitting. Columns you don't need to use should be left blank.



5. **Mixed numbers** such as  $3\frac{1}{2}$  must be gridded as

3.5 or 7/2. (If 

3	1	/	2
<input type="radio"/>	<input type="radio"/>	<input type="radio"/>	<input type="radio"/>

 is entered into the grid, it will be interpreted as  $\frac{31}{2}$ , not  $3\frac{1}{2}$ .)

6. **Decimal answers:** If you obtain a decimal answer with more digits than the grid can accommodate, it may be either rounded or truncated, but it must fill the entire grid.

Acceptable ways to grid  $\frac{2}{3}$  are:

	2	/	3
<input type="radio"/>	<input type="radio"/>	<input type="radio"/>	<input type="radio"/>
<input type="radio"/>	0	0	0
1	1	1	1
2	<input type="radio"/>	2	2
3	3	3	<input type="radio"/>
4	4	4	4
5	5	5	5
6	6	6	6
7	7	7	7
8	8	8	8

.	6	6	6
<input type="radio"/>	<input type="radio"/>	<input type="radio"/>	<input type="radio"/>
<input type="radio"/>	0	0	0
1	1	1	1
2	2	2	2
3	3	3	3
4	4	4	4
5	5	5	5
6	<input type="radio"/>	<input type="radio"/>	<input type="radio"/>
7	7	7	7
8	8	8	8

.	6	6	7
<input type="radio"/>	<input type="radio"/>	<input type="radio"/>	<input type="radio"/>
<input type="radio"/>	0	0	0
1	1	1	1
2	2	2	2
3	3	3	3
4	4	4	4
5	5	5	5
6	<input type="radio"/>	<input type="radio"/>	6
7	7	7	<input type="radio"/>
8	8	8	8

Section 1	Reading	55 minutes	42 questions (4 single passages 1 pair of passages)
Section 2	Writing and Language	30 minutes	40 questions (4 passages)
Section 3	Math – No Calculator	20 minutes	13 questions
Section 4	Math - Calculator	40 minutes	25 questions



# APRIL 2019

Sunday	Monday	Tuesday	Wednesday	Thursday	Friday	Saturday
	1	2	3	4	5	6
7	8	9	10	11	12	13
14	15	16	17	18	19	20
21	22	23	24	25	26	27
28	29	30				



Answer every question.  
There is no penalty for  
guessing.

# What to expect on the Reading Test

- All questions are multiple choice.
- No mathematical computation required.
- Prior topic-specific knowledge is not tested.
- One passage from a classic or contemporary work of U.S. or world literature.
- One passage or a pair of passages from either a U.S. founding document or a text in the great global conversation they inspired. The U.S. Constitution or a speech by Nelson Mandela, for example.
- A selection about economics, psychology, sociology, or some other social science.
- Two science passages (or one passage and one passage pair) that examine foundational concepts and developments in Earth science, biology, chemistry, or physics.

# What to expect on the Writing and Language Test

- All questions are multiple choice and based on passages.
- Some passages are paired with informational graphics such as charts, graphs, and tables.
- No mathematical computation is required.
- Prior topic-specific knowledge is not tested.
- This section puts students in the active role of an editor who is improving a written passage. Most questions ask students to decide which, if any, of the three alternatives to an underlined part of a passage most improves it.

# What to expect on the Math Test

- Most are multiple choice, but some will be student-produced grid ins.
- Even though there is a calculator section, no question requires one.
- For the calculator section, students can use their own graphing calculator or scientific calculator. Students should be familiar with the calculator.
- No smartphones or tablets are permitted.



#### 4. Accommodation Is Received on School Tests

With few exceptions, students who request an accommodation on College Board exams receive that accommodation on tests that they take in school. However, students who receive an accommodation in school or have an Individualized Education Program (IEP) or 504 Plan that includes the accommodation do not automatically qualify for the accommodation on College Board exams — they must still be approved by the College Board's Services for Students with Disabilities, and in some cases documentation will be requested for the College Board's review.

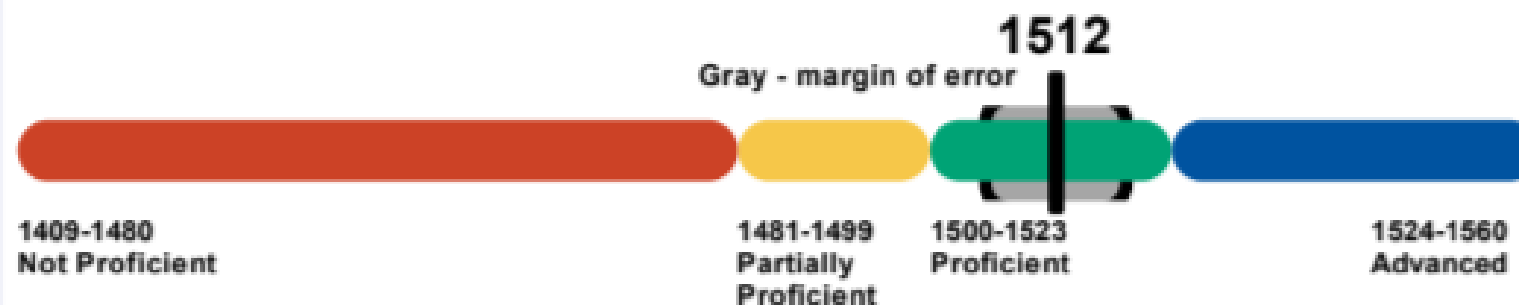
# Students needing accommodations

What's Your  
Score?





## English Language Arts Overall Performance Level and Scale Score



Subject	Scale Score	Margin of Error	Performance Level	Student Growth Percentile
English Language Arts	1512	$\pm 7$	Proficient	NA



Most at risk of falling behind



Attention may be indicated



Adequate progress

### Claims

### Claim Performance Indicators

1: Reading			Attention
2: Writing			Adequate
3: Listening			Attention
4: Research			Attention

---

# Understanding My Paper Score Report

**PSAT™ 8/9**

 **CollegeBoard**

## PSAT 8/9 Grade-Level Benchmarks

Evidence-Based  
Reading and Writing

Math

8th Grade  
PSAT 8/9

390

430

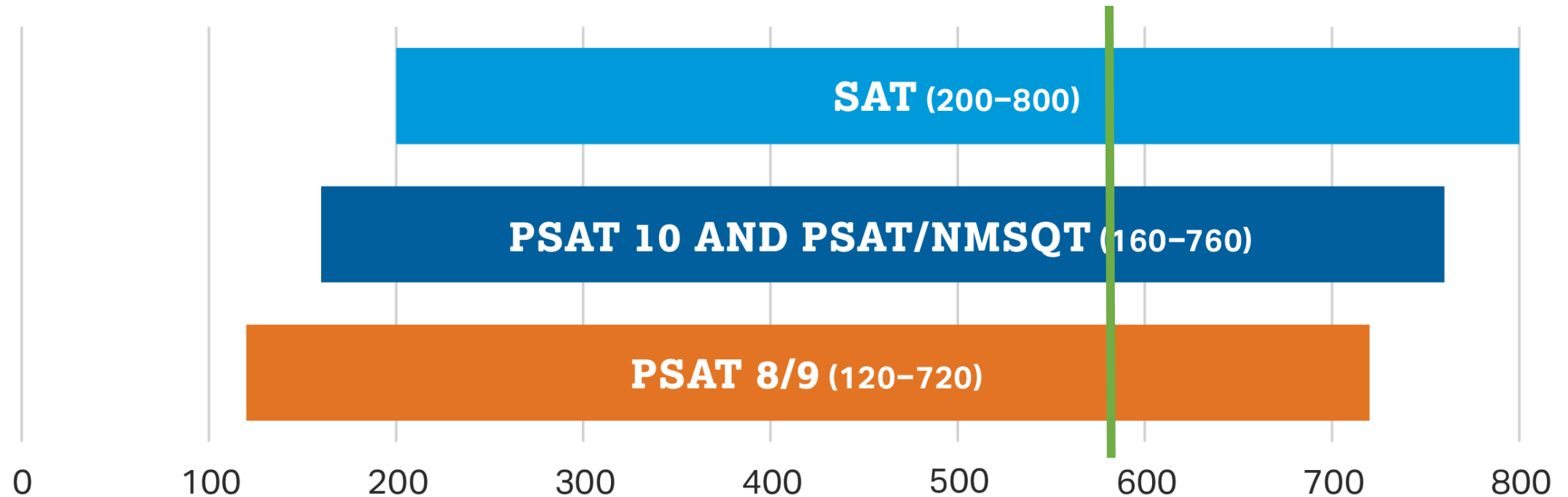
9th Grade  
PSAT 8/9

410

450

The score students get on the PSAT 8/9 is the same score they would have gotten on the PSAT 10 or SAT if they had taken it on the same day.

### SAT Suite Score Scale



If a student earns a score of 580 on the PSAT 8/9, this is the score a student would earn if they had taken the PSAT 10 or SAT on the same day; however since the total points possible are different, the score has a different meaning at the current grade level

# What Are My Scores?

Scores for the assessments in the SAT® Suite are vertically equated.

Hi, Ima B. Student

School Name: John F. Kennedy High School, School Code: 123456  
Fall 2016, Grade: 9th Grade  
Student ID: 543210987  
Optional Code: 00  
Access Code: A02670146P

**PSAT™ 8/9** **CollegeBoard**

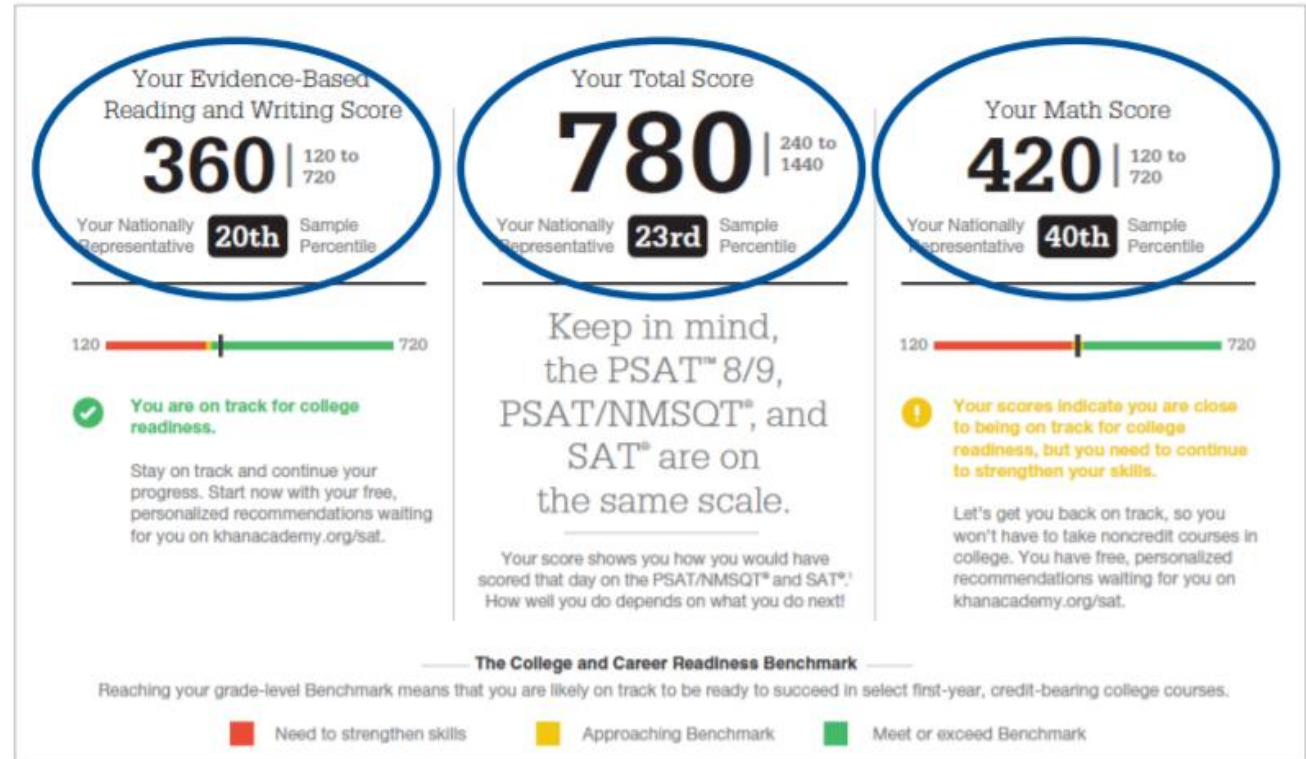
Your Score Report

Get your full report online  
[studentcores.collegeboard.org](http://studentcores.collegeboard.org) Access Code: A02670146P

**Free Practice**  
Practice the skills you need for high school and beyond with Khan Academy™ - free online on satpractice.org.

**Core Course Work**  
Use your results to create a core course work plan in high school.

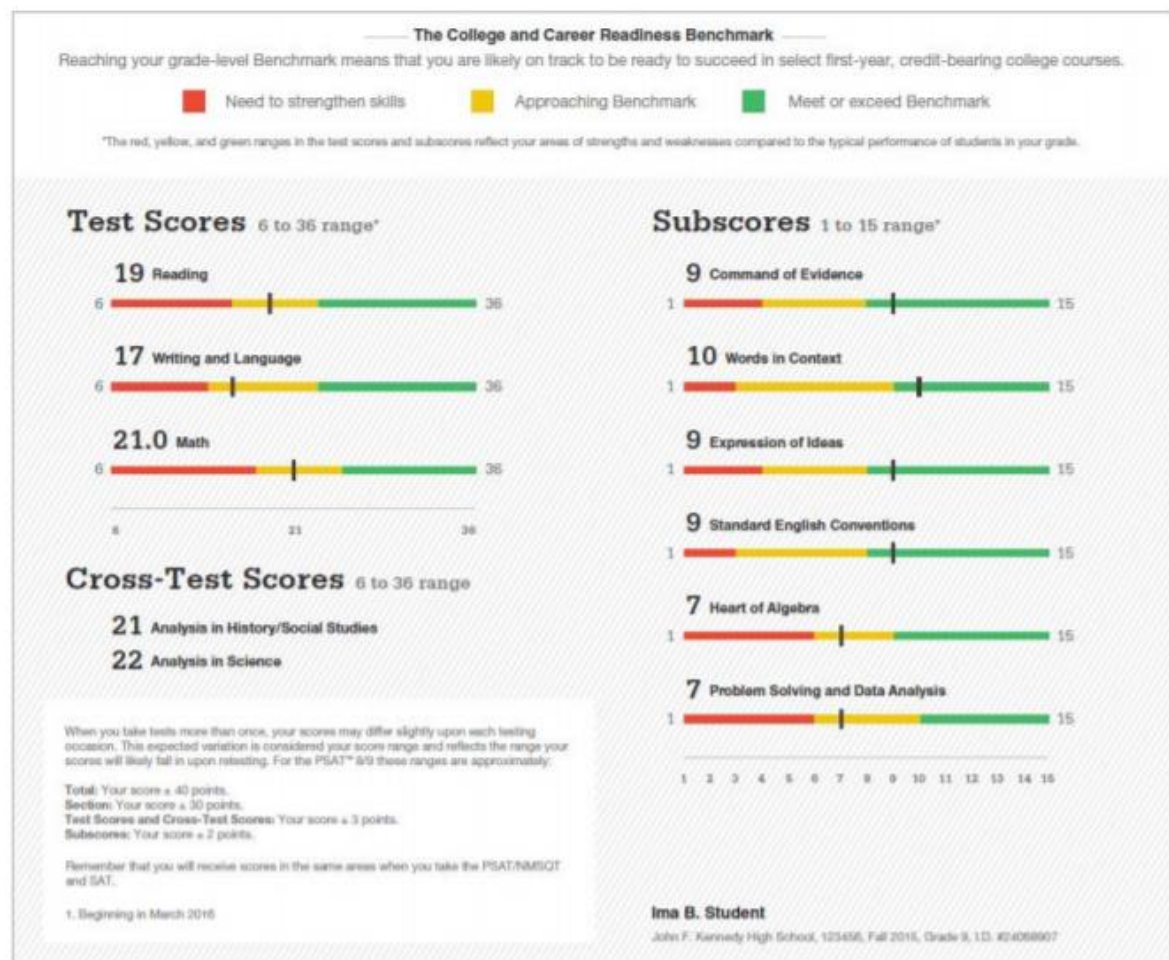
**Explore**  
Discover majors and careers that connect to the things you care about most with Ready by Nation™.





# What Are My Scores? *(cont.)*

Test scores, cross-test scores, and subscores give students insightful information about their strengths and areas for improvement.



# What Are My Areas of Strength? What Skills Do I Need to Build?

## Your Scores: Next Steps

### Your Scores: Next Steps

Your score indicates that you are already likely able to: Reading Test Improve your skills by focusing on your ability to:

- Revise text as needed to improve the exactness or content appropriateness of word choices within somewhat challenging texts
- Retain or add information or ideas to a piece of a text to support claims or points in somewhat challenging text
- Revise somewhat challenging text to ensure that information is presented in the most logical order
- Revise text as needed to improve the exactness or content appropriateness of word choices within somewhat challenging texts



- Retain or add information or ideas to a piece of text to support claims or points in challenging text
- Use a variety of sentence structures to accomplish a rhetorical purpose such as persuading an audience
- Revise text as needed to improve the exactness or content appropriateness of word choices within challenging texts
- Retain or add information or ideas to a piece of text to support claims or points in challenging text
- Use a variety of sentence structures to accomplish a rhetorical purpose such as persuading an audience

### Writing and Language Test

- Draw reasonable conclusions from somewhat challenging texts
- Describe the overall structure of a somewhat challenging text
- Identify claims and counterclaims explicitly stated in a somewhat challenging passage
- Revise text as needed to improve the exactness or content appropriateness of word choices within somewhat challenging texts



- Draw reasonable inferences and logical conclusions from challenging texts
- Analyze information presented quantitatively in such forms as graphs, tables, and charts and relate that information to information presented in somewhat challenging text
- Determine how the selection of specific words shapes meaning and tone in a challenging passage
- Use a variety of sentence structures to accomplish a rhetorical purpose such as persuading an audience
- Retain or add information or ideas to a piece of text to support claims or points in challenging text

### Math Test

- Interpret a linear inequality in one variable with rational coefficients that represents a context. Select the equation of a line of best fit and interpret the slope and intercept of the line in the context of the situation (when a linear model is appropriate)
- Interpret sample statistics understanding and using margin of error
- Solve and interpret a quadratic function or equation that represents a context and requires multiple steps
- Calculate and interpret frequency distributions using tables and other representational methods



- Determine how a graph may be affected by a change to its equation
- Determine the value of a constant or coefficient for an equation with no solution or infinitely many solutions
- Using a simplified model, make a prediction and compare the predicted values with the actual values in the data set
- Within a context, compare the center of two separate data sets with different spreads
- Determine whether two events are independent given their probabilities
- Use a variety of sentence structures to accomplish a rhetorical

# Your Question-Level Feedback

## QUESTIONS OVERVIEW

### READING

**42**

Total Questions

**21**

Correct Answers

**21**

Incorrect Answers

**0**

Omitted Answers

### WRITING AND LANGUAGE

**40**

Total Questions

**17**

Correct Answers

**23**

Incorrect Answers

**0**

Omitted Answers

### MATH – CALCULATOR

**25**

Total Questions

**12**

Correct Answers

**12**

Incorrect Answers

**1**

Omitted Answers

### MATH – NO CALCULATOR

**13**

Total Questions

**8**

Correct Answers

**5**

Incorrect Answers

**0**

Omitted Answers

\*Tip: A great way to start improving: check

### READING

Question #	Correct	Your Answer	Difficulty
1	D	✓	■ ■ ■ ■
2	C	A	■ ■ ■ ■
3	A	C	■ ■ ■ ■
4	B	A	■ ■ ■ ■
5	A	✓	■ ■ ■ ■
6	D	✓	■ ■ ■ ■
7	A	✓	■ ■ ■ ■
8	D	✓	■ ■ ■ ■
9	C	A	■ ■ ■ ■
10	B	A	■ ■ ■ ■
11	D	✓	■ ■ ■ ■
12	A	✓	■ ■ ■ ■
13	B	D	■ ■ ■ ■
14	B	✓	■ ■ ■ ■
15	C	A	■ ■ ■ ■
16	B	✓	■ ■ ■ ■
17	C	✓	■ ■ ■ ■
18	A	✓	■ ■ ■ ■
19	B	D	■ ■ ■ ■
20	D	✓	■ ■ ■ ■
21	B	✓	■ ■ ■ ■
22	C	B	■ ■ ■ ■
23	C	✓	■ ■ ■ ■
24	C	✓	■ ■ ■ ■
25	D	A	■ ■ ■ ■
26	A	✓	■ ■ ■ ■
27	B	A	■ ■ ■ ■
28	A	D	■ ■ ■ ■
29	D	B	■ ■ ■ ■
30	B	A	■ ■ ■ ■
31	C	✓	■ ■ ■ ■
32	D	B	■ ■ ■ ■
33	D	✓	■ ■ ■ ■
34	D	C	■ ■ ■ ■
35	B	D	■ ■ ■ ■
36	C	✓	■ ■ ■ ■
37	A	✓	■ ■ ■ ■
38	A	D	■ ■ ■ ■
39	D	C	■ ■ ■ ■
40	C	D	■ ■ ■ ■
41	D	A	■ ■ ■ ■
42	C	✓	■ ■ ■ ■

### WRITING AND LANGUAGE

Question #	Correct	Your Answer	Difficulty
1	A	C	■ ■ ■ ■
2	D	A	■ ■ ■ ■
3	C	✓	■ ■ ■ ■
4	A	D	■ ■ ■ ■
5	B	A	■ ■ ■ ■
6	C	✓	■ ■ ■ ■
7	A	C	■ ■ ■ ■
8	C	✓	■ ■ ■ ■
9	C	✓	■ ■ ■ ■
10	D	C	■ ■ ■ ■
11	A	B	■ ■ ■ ■
12	B	✓	■ ■ ■ ■
13	D	B	■ ■ ■ ■
14	C	A	■ ■ ■ ■
15	C	✓	■ ■ ■ ■
16	D	C	■ ■ ■ ■
17	B	D	■ ■ ■ ■
18	A	C	■ ■ ■ ■
19	C	✓	■ ■ ■ ■
20	B	✓	■ ■ ■ ■
21	D	✓	■ ■ ■ ■
22	D	✓	■ ■ ■ ■
23	C	A	■ ■ ■ ■
24	C	B	■ ■ ■ ■
25	C	✓	■ ■ ■ ■
26	A	✓	■ ■ ■ ■
27	D	C	■ ■ ■ ■
28	B	D	■ ■ ■ ■
29	A	C	■ ■ ■ ■
30	A	✓	■ ■ ■ ■
31	A	B	■ ■ ■ ■
32	C	B	■ ■ ■ ■
33	D	✓	■ ■ ■ ■
34	B	D	■ ■ ■ ■
35	C	✓	■ ■ ■ ■
36	B	C	■ ■ ■ ■
37	A	✓	■ ■ ■ ■
38	D	B	■ ■ ■ ■
39	B	✓	■ ■ ■ ■
40	D	B	■ ■ ■ ■

### MATH – CALCULATOR

Question #	Correct	Your Answer	Difficulty
1	A	✓	■ ■ ■ ■
2	C	✓	■ ■ ■ ■
3	A	✓	■ ■ ■ ■
4	D	✓	■ ■ ■ ■
5	B	A	■ ■ ■ ■
6	A	✓	■ ■ ■ ■
7	D	✓	■ ■ ■ ■
8	C	D	■ ■ ■ ■
9	C	✓	■ ■ ■ ■
10	B	A	■ ■ ■ ■
11	C	✓	■ ■ ■ ■

Question #	Correct	Your Answer	Difficulty
22	7.55, 151/20	✓	■ ■ ■ ■
23	35	✗	■ ■ ■ ■
24	3540	254	■ ■ ■ ■
25	5	30	■ ■ ■ ■

### MATH – NO CALCULATOR

Question #	Correct	Your Answer	Difficulty
1	B	✓	■ ■ ■ ■
2	A	✓	■ ■ ■ ■
3	B	✓	■ ■ ■ ■
4	C	✓	■ ■ ■ ■
5	C	B	■ ■ ■ ■

Question #	Correct	Your Answer	Difficulty
11	29/2, 14.5	✓	■ ■ ■ ■
12	2	1/2	■ ■ ■ ■

### MATH – CALCULATOR

Question #	Correct	Your Answer	Difficulty
12	A	B	■ ■ ■ ■
13	B	C	■ ■ ■ ■
14	C	✓	■ ■ ■ ■
15	A	D	■ ■ ■ ■
16	B	C	■ ■ ■ ■
17	D	B	■ ■ ■ ■
18	D	✓	■ ■ ■ ■
19	A	✓	■ ■ ■ ■
20	B	C	■ ■ ■ ■
21	B	A	■ ■ ■ ■

Welcome, **Maryn.**

PSAT 8/9

April 10, 2018

9th Grade

**830**

Total Score

[View Details](#)

**390**

Evidence-Based Reading  
and Writing

**440**

Math

Keep in mind, the PSAT 8/9, PSAT/NMSQT and SAT are on the same scale. Your score shows you how you would have scored that day on the PSAT/NMSQT and SAT. How well you do depends on what you do next!

Get Free SAT  
Practice on Khan  
Academy®



Take Challenging  
Courses



Create Your  
College List



Register for SAT

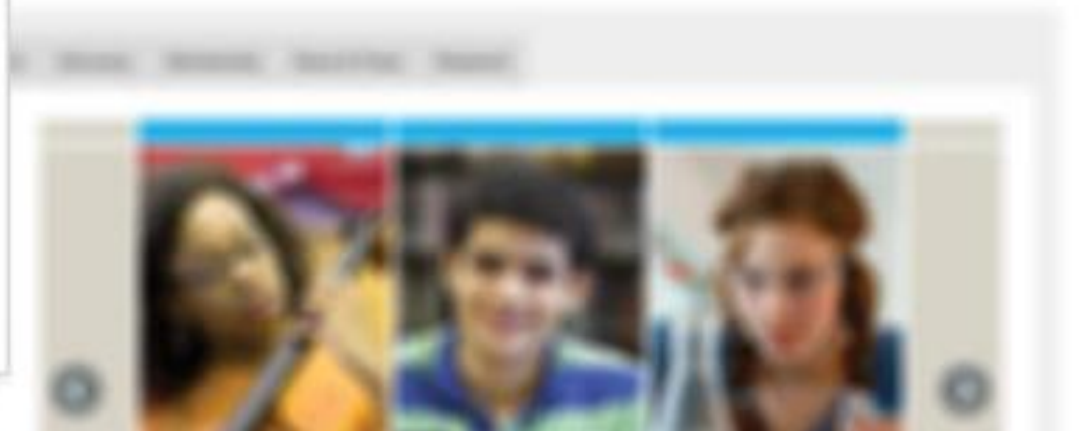


# Setting up your College Board Account

Username

Password

[Sign In](#) [Sign Up](#)





---

# Why sign up for a free college board account?

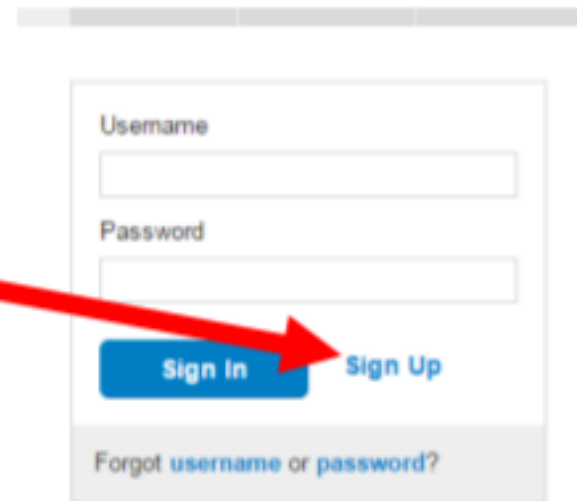
- **With a College Board Account, you will be able to:**
  - Access your PSAT, SAT and AP scores online
  - Send your scores to colleges and universities
  - Register for national administrations of additional SAT exams, or for the College Level Examination Program (CLEP) exams
- **In addition to reviewing your scores, you can:**
  - Manage a list of colleges you are interested in
  - Search for scholarship opportunities
  - Compare costs and programs at colleges and universities

## How Create a Student College Board Account

### Create a College Board Account:

Go to <http://collegeboard.org>.

- Sign in to your College Board account; if you do not have a College Board account, click “Sign Up” to create one (on left side of screen).
- The steps for creating a College Board account are:
  - Click on the “Sign Up” in blue letters.
  - Select “I am a Student.”
  - Fill in the fields to create your student account, ensuring that all information is correct.



A screenshot of the College Board login and sign-up interface. It features two input fields labeled 'Username' and 'Password'. Below these fields are two buttons: a blue 'Sign In' button and a blue 'Sign Up' button. A red arrow points from the text 'Sign Up' in the list above to the 'Sign Up' button. At the bottom of the form is a link that says 'Forgot username or password?'.

### Create Your Student Account

This one account is for everything, including SAT, AP, PSAT/NMSQT, CLEP, and



Student scores will be released to their  
College Board accounts in





<https://studentscores.collegeboard.org/viewscore>

# Official SAT<sup>®</sup> Practice

## Raising confidence and scores

**20 hours of practice on Khan Academy is associated with an average 115-point score increase from the PSAT/NMSQT to the SAT, nearly double the average gain without Khan**

In 2017, Khan Academy and the College Board, the maker of the SAT, analyzed gains between the PSAT/NMSQT and the SAT and found a positive relationship between use of Official SAT Practice and score improvements on the SAT. Score gains are consistent across gender, family income, race, ethnicity and parental education level.



# Resources

[www.collegeboard.org](http://www.collegeboard.org)




For general information about the PSAT 8/9, please visit:



[psat.org/8-9](https://psat.org/8-9)  
2018-19

[collegereadiness.collegeboard.org/pdf/psat-8-9-student-guide.pdf](https://collegereadiness.collegeboard.org/pdf/psat-8-9-student-guide.pdf)

**PSAT™ 8/9**  
**Student**  
**Guide**

-  Important information about the PSAT 8/9
-  Test-taking advice and tips
-  Directions and sample test questions



ONE DAY,  
ONE TEST, AND  
**ONE** SCORE  
DO NOT  
→ DEFINE ←  
YOU

