

plantemoran.com

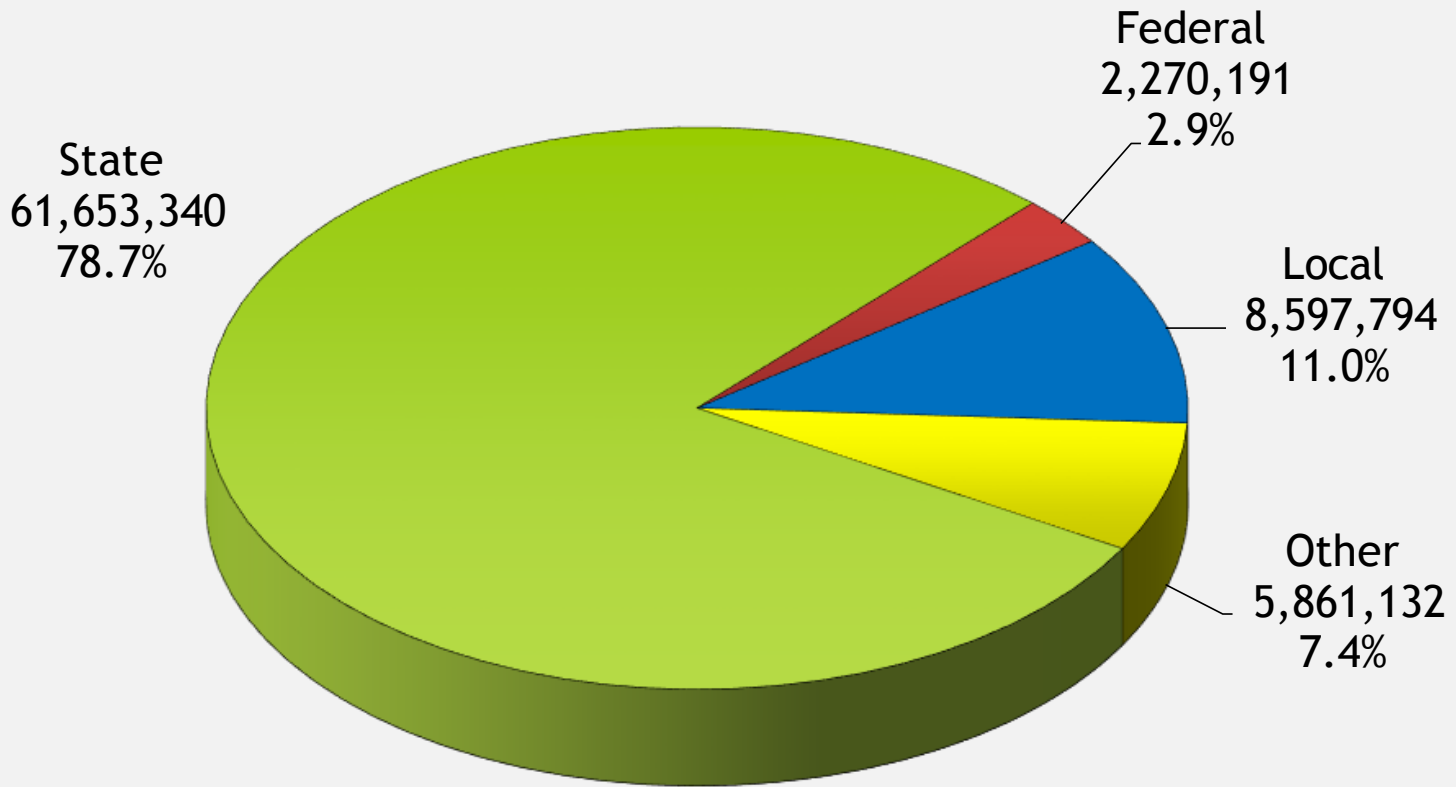


■ Lake Orion Community Schools Board Presentation

FOR YEAR ENDED JUNE 30, 2015

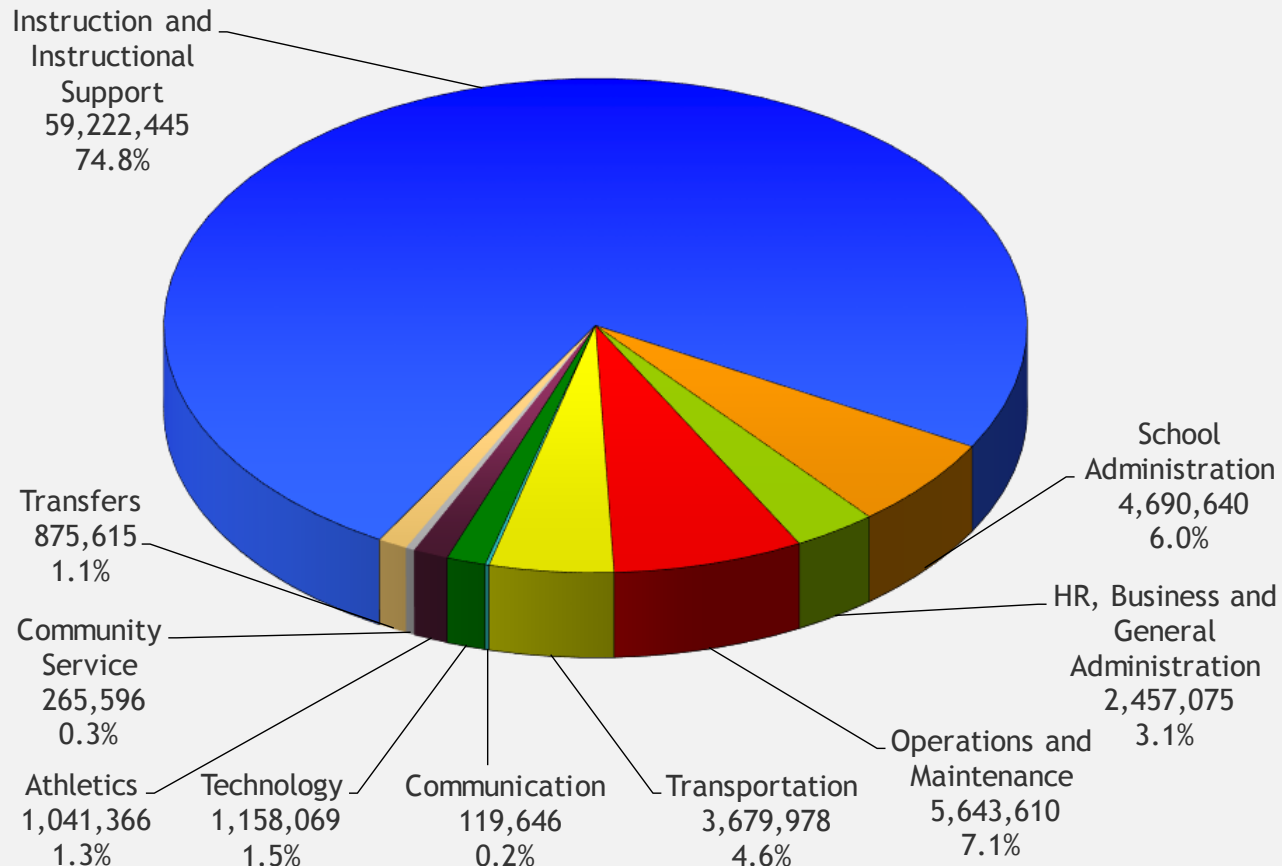
General Fund Revenue Year Ended June 30, 2015

Total Revenue - \$78,382,457



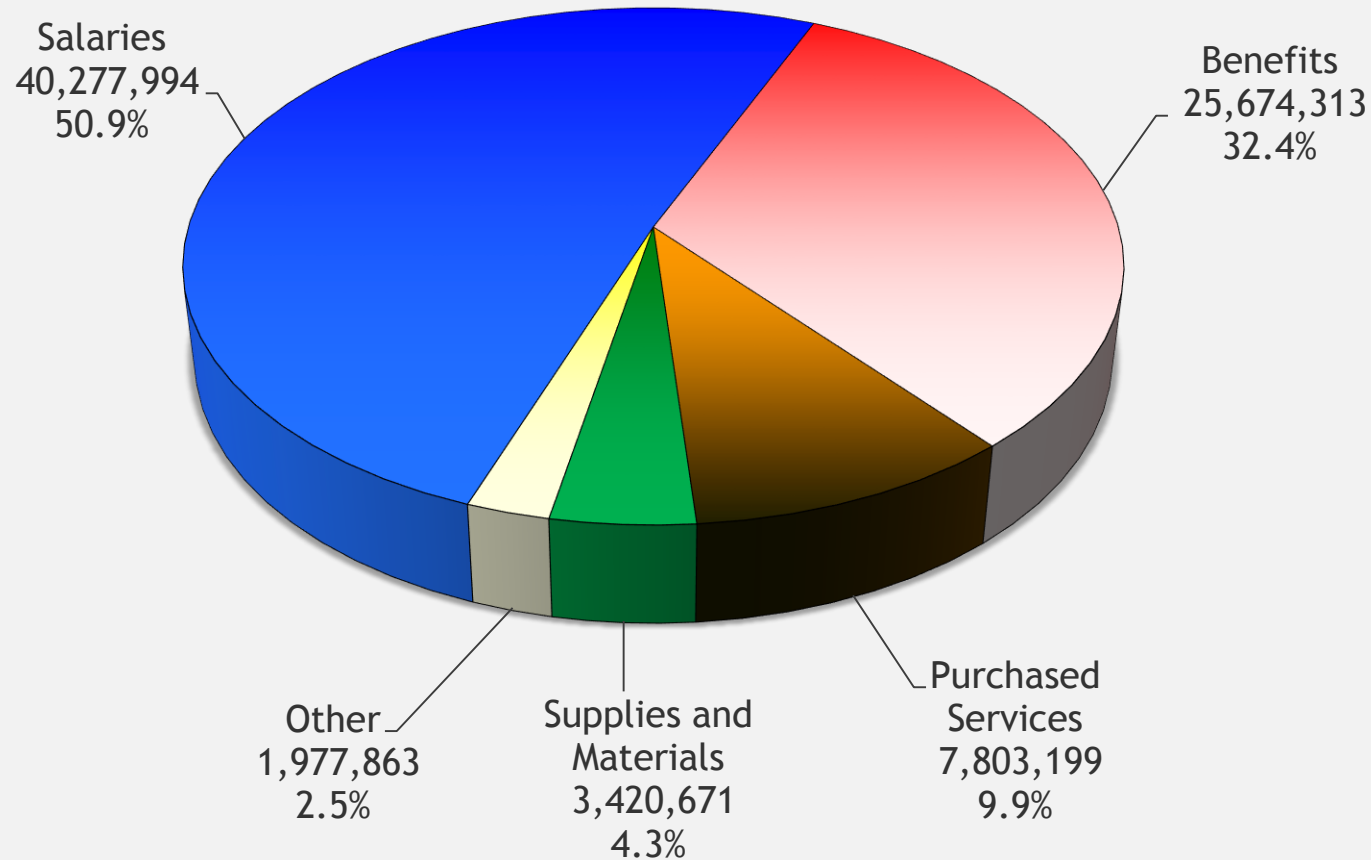
General Fund Expenditures (By Function) Year Ended June 30, 2015

Total Expenditures - \$79,154,040



General Fund Expenditures (By Object) Year Ended June 30, 2015

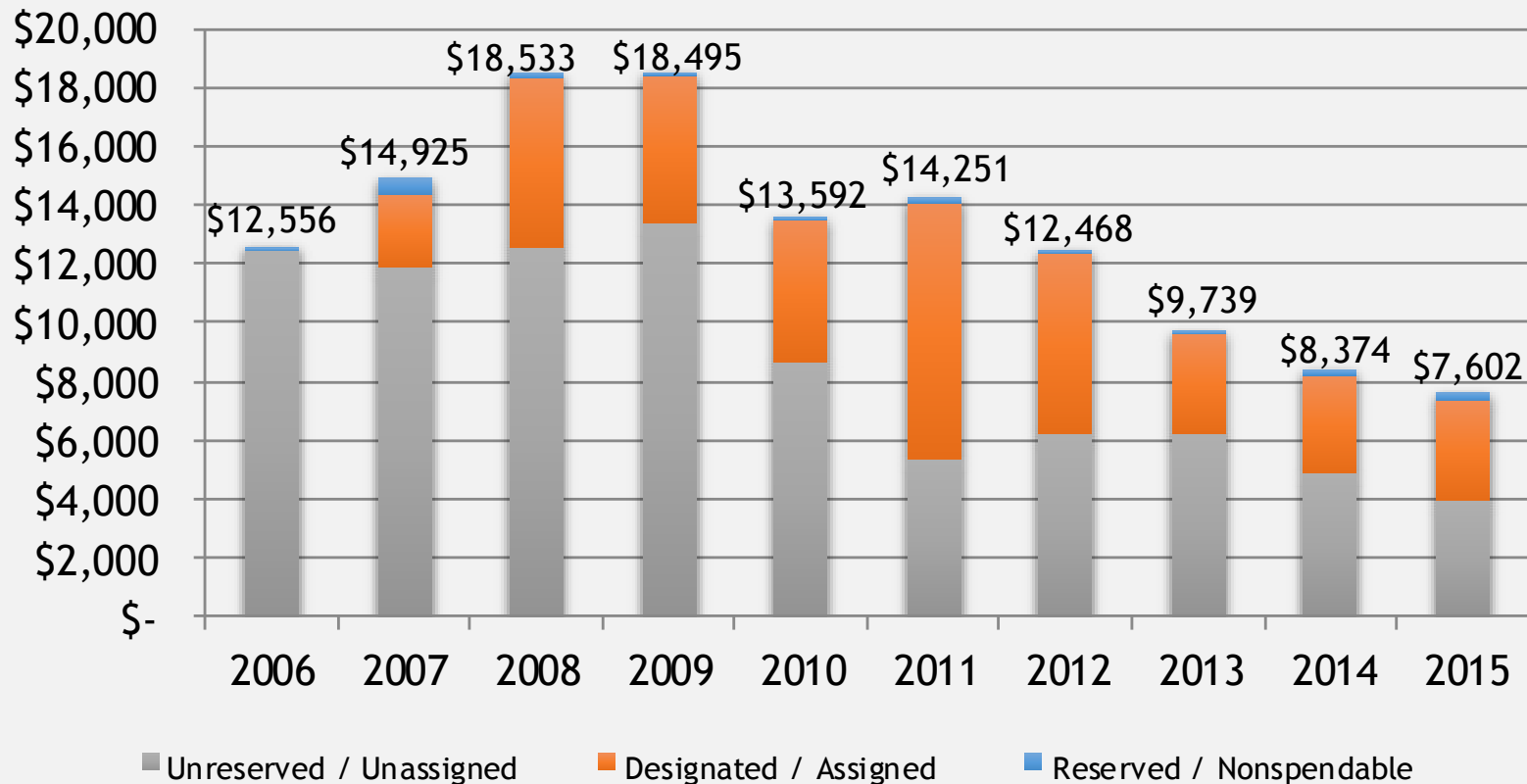
Total Expenditures - \$79,154,040



General Fund - Fund Balance

As of the Years Ended June 30, 2006 through 2015

Thousands of Dollars



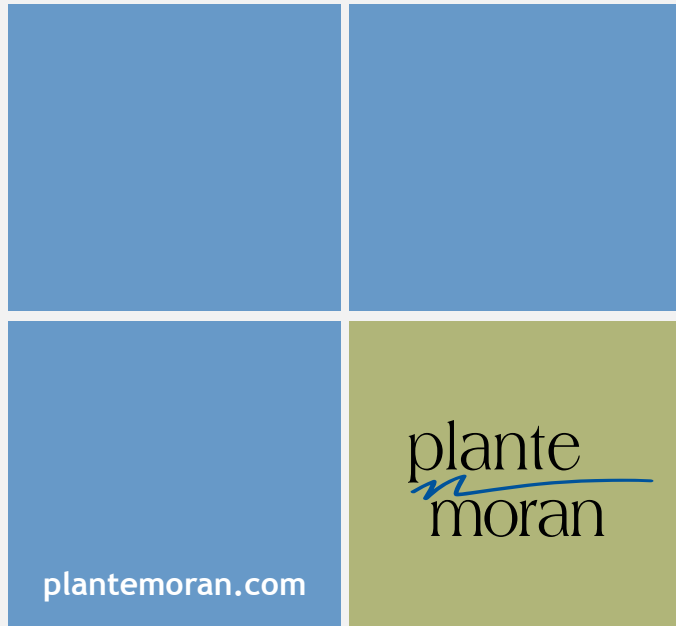
Note - 2015 Assigned Fund Balance includes long-term obligations (approximately \$3.4M)

*2016 Fund Balance is estimated based on the 15-16 budgeted increase to fund balance

Changes in General Fund Fund Balance

Years Ended June 30, 2015

Change in Fund Balance:	General Fund 2015 Actual
Fund Balance - June 30	\$ 8,373,762
Revenue and other financing sources	78,382,457
Expenditures and other financing uses	79,154,040
Current Year Decrease	(771,583)
Fund Balance - June 30	\$ 7,602,179
Fund Balance as a percentage of total expenditures and other uses	9.6%
Weeks of operations	4.99



■ THANK YOU